

Get ready for digital tools !

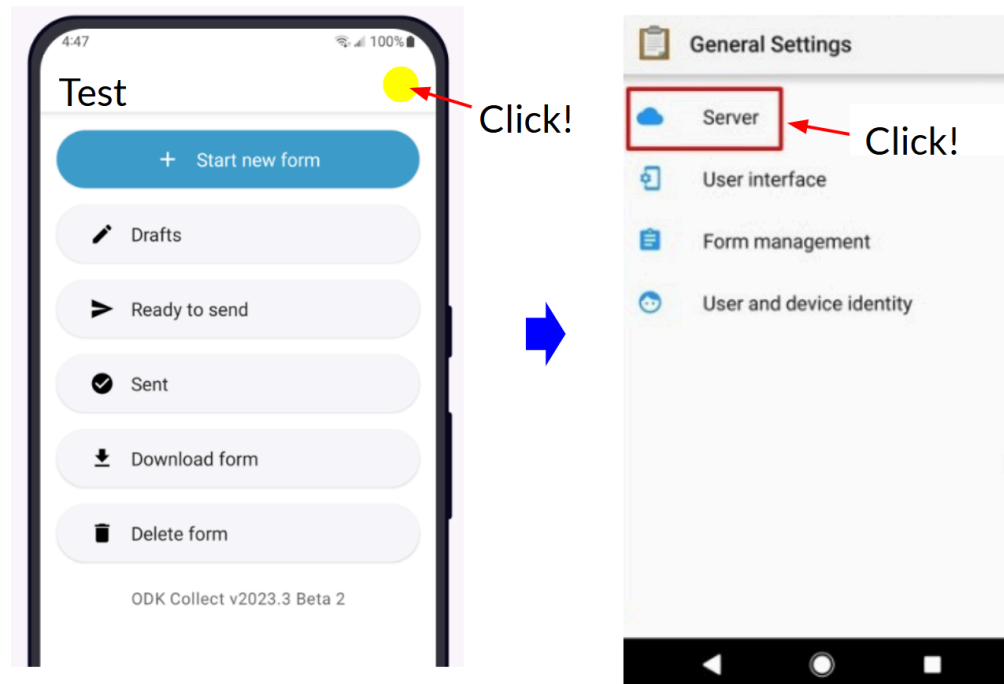
ID tools (offline usage / for participants abroad)

1. Install ODK collect / Move it on your homescreen



https://play.google.com/store/apps/details?id=org.odk.collect.android&pcampaignid=web_share

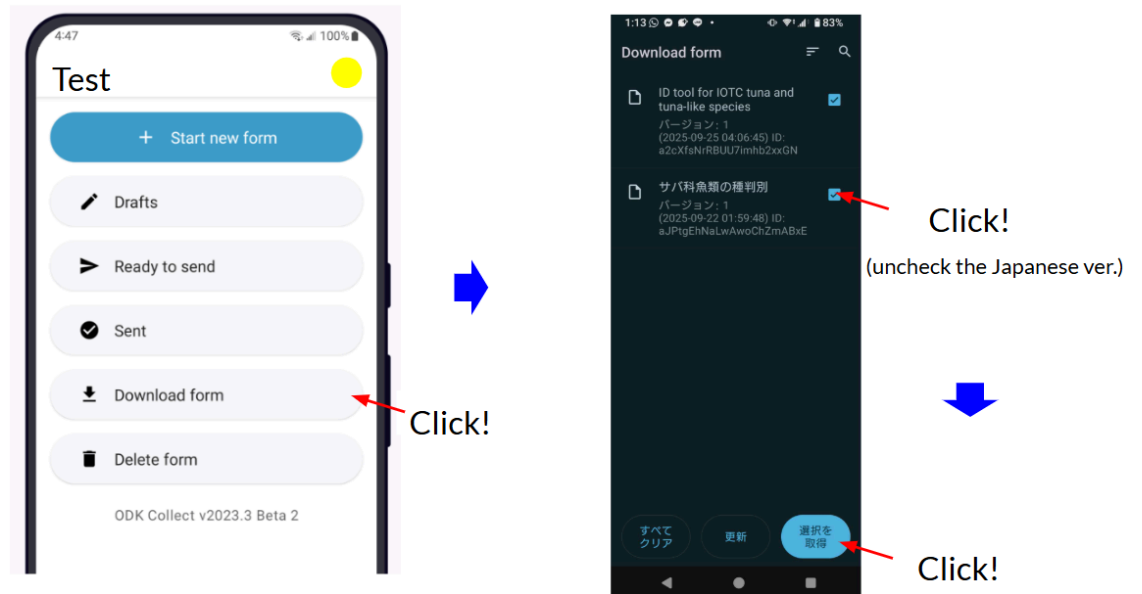
2. Settle the server setting



Follow as below;

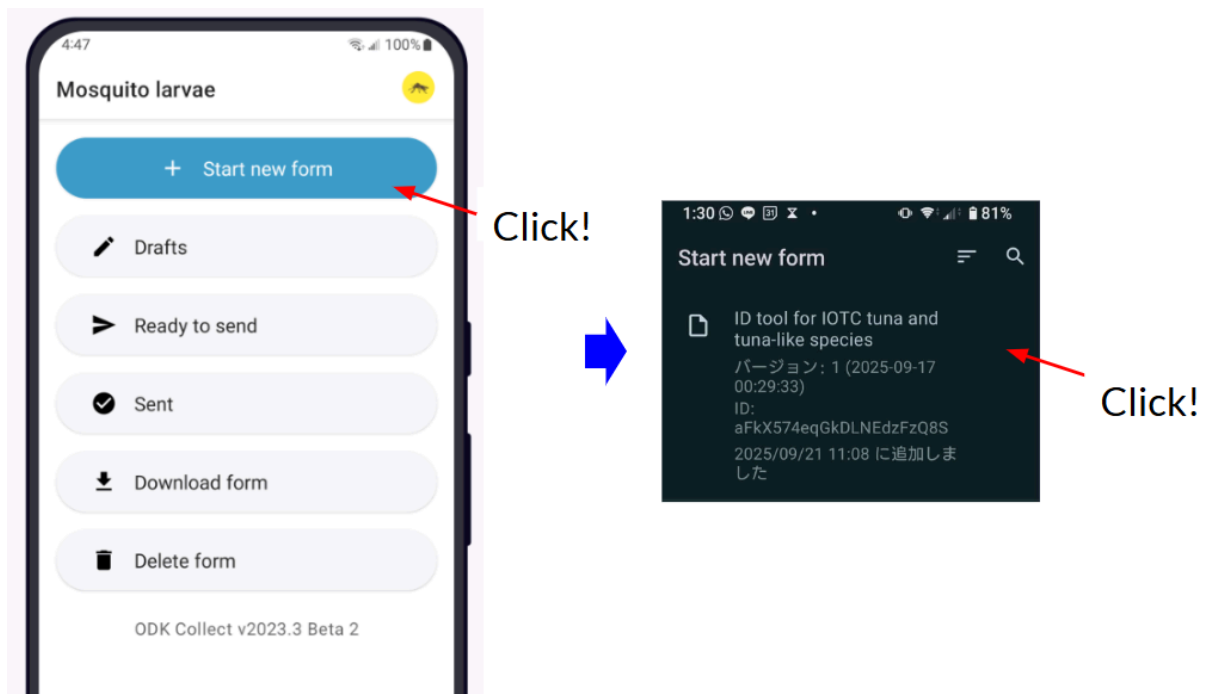
URL	https://kf.kobotoolbox.org
Username	iotcofcf
Password	iotcofcf

3. Download the latest ID tool form



ODK collect will start downloading data necessary for offline usage.

4. Start the downloaded ID tool form



5. You're ready for species identification!

Get ready for digital tools !

ID tools (online usage / for domestic participants)

1. Access the latest ID tool




ID tool for IOTC species

Find the latest version of the ID tools here!

ID tool for IOTC tuna and tuna-like species

ENGLISH [Version 25 Sep 2025 \(Modified & edited by OFCF Japan\)](#)



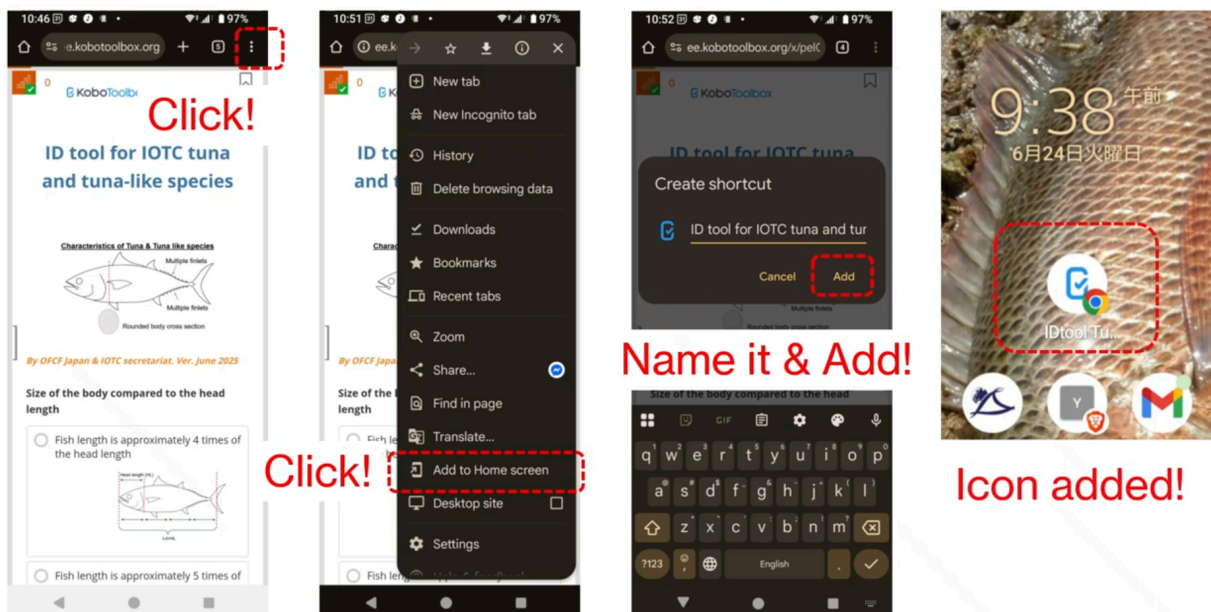
Choose the latest version!

[Version 29 Aug 2025 \(Modified & edited by OFCF Japan\)](#)

[Version 9 Aug 2025 \(Modified & edited by OFCF Japan\)](#)

[Version 1 July 2025 \(Modified & edited by OFCF Japan\)](#)

2. Put it on the homescreen



3. You're ready for species identification!

Check out the website!

“Guide for identification of IOTC species”



<https://iotcofcf.wixsite.com/speciesid>

YouTube videos, Photo library, detailed guidance on how to identify confusing species, latest version of the ID tool is all available here!